



GENE **Krupa**

Col. 36954 **WE'LL GATHER LILACS**
Vocal Chorus by Buddy Stewart
GIMME A LITTLE KISS
(Will Ya, Huh!)
Vocal Chorus by Carolyn Grey and
Buddy Stewart

Gene offers two more sides in which his versatile band shows the contrasts in rhythm and mood of which it is capable. **WE'LL GATHER LILACS** presents Buddy Stewart singing a new ballad. **GIMME A LITTLE KISS** is an oldie, and here the Krupa band steps, with a beat which rocks, and the taste of Gene's rhythm underlying the band.



FRED **Lowery**

Col. 36952 **WHISTLIN' JOE**
Whistling by Fred Lowery and vocal by
Dorothy Roe; orchestra under the
direction of Mitchell Ayres
**FROM THE LAND OF THE SKY-
BLUE WATER**
Whistling by Fred Lowery with Guitar
and Novichord

Fred Lowery is joined on the first of these sides by Dorothy Roe, who wrote the tune for her whistling partner. Their combined talents make it one of Fred's best records. On the reverse, Fred whistles a free and beautiful version of a familiar melody.



THE **rambling rogue**

Col. 36951 **BLUES IN MY MIND
IF IT'S WRONG TO LOVE YOU**
Both Vocals with Instrumental Acc.

There's a place in everyone's collection for Columbia Folk records, and here again is one of your favorites singing two sides which tell their own tale of "the blues." The **Rambling Rogue** sings with instrumental accompaniment about his woman troubles, and both sides will be welcomed by Folk music enthusiasts.



"THE COLUMBIA RECORD SHOP" (the most popular show of its kind on the air)

Be Entertained by Columbia Stars and hear their latest record releases! **MARTIN BLOCK** will surprise you with his intimate news, gossip and highlights about your favorites! **LISTEN IN** every week over your local station. Consult newspaper radio guide for the correct time.

Build your record library and let "The Columbia Record Shop" be your barometer of Pop Hits!

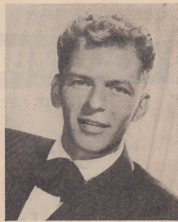


columbia best sellers check list

THE VOICE OF FRANK SINATRA
Frank Sinatra (Orchestra under the direction of Axel Stordahl)
C-112
COL. 36905
DAY BY DAY
Frank Sinatra
I'M IN LOVE WITH TWO SWEETHEARTS
Henry James and his Orchestra
I WISH I COULD TELL YOU
Benny Goodman and his Orchestra
ATLANTA, G. A.
Woody Herman and his Orchestra
SHOO-FLY PIE AND APPLE PAN DOWDY
Dinah Shore
36933
36908
36949
36943

OH! WHAT IT SEEMED TO BE
Frankie Carle and his Orchestra
36892
WALTER WINCHELL RHUMBA
Xavier Cugat and his Orchestra
36902
DAY BY DAY
Les Brown and his Orchestra
36945
PATIENCE AND FORTITUDE
Count Basie and his Orchestra
36946
HOP, SKIP, AND JUMP
Gene Krupa and his Orchestra
36931
TAKE CARE
Tommy Tucker Time
36916
PERSONALITY
Pearl Bailey
36930

SILVER SPURS
Gene Autry
36904
HONEY DO YOU THINK IT'S WRONG
Al Dexter and his Troopers
36898
BEYOND THE SHADOW OF A DOUBT
Ted Daffan's Tenors
36917
YOU CAN'T BREAK MY HEART
Spade Cooley and his Orchestra
36935
SEARCHING FOR A SOLDIER'S GRAVE
Balls Brothers
36932
ROCKY ROAD BLUES
Bill Monroe and his Blue Grass Boys
36907



FRANK **sinatra**

Col. 36962 **ALL THROUGH THE DAY
TWO HEARTS ARE BETTER
THAN ONE**
Both from "Centennial Summer"
Orchestra under the direction of Axel
Stordahl

As Frank's popularity grows, his records show an increasing mastery of delicate shadings. In the newest Sinatra release, Frank sings **ALL THROUGH THE DAY** (one of Jerome Kern's last songs) as delightfully as a song can be sung. **TWO HEARTS ARE BETTER THAN ONE** is another feature of "Centennial Summer" which will capture the hearts of Sinatra followers.



BENNY **goodman**

Col. 36955 **IT'S THE TALK OF THE TOWN
SWING ANGEL**

Another Goodman classic is this new side featuring Art Lund in his first release for Benny since returning to the band. Art, who was recently discharged from the Navy, is predicted to become the nation's newest singing star. **SWING ANGEL** is a fitting choice for the reverse. In it are featured Mel Powell on piano, Lou McGarity on trombone, Stan Getz on tenor, and, of course, the Goodman Clarinet in some of the best work Benny has recorded recently.



WOODY **herman**

Col. 36936 **WELCOME TO MY DREAM
IT'S ANYBODY'S SPRING**
Vocal Chorus by Woody Herman
Both from "Road To Utopia"

Here's a duo of hit songs from the latest Crosby-Hoppe opus. **WELCOME TO MY DREAM**, arranged by Woody's ex-piano player Ralph Burns, is a slow, moving ballad sung by Frances Wayne. There is some good Herman alto sax, as well as a trombone solo by Bill Harris, in keeping with his all-star rating. **IT'S ANYBODY'S SPRING** features Woody's alto and vocal, as well as Red Norvo on vibes.



KAY **kyser**

Col. 36960 **ONE-ZY TWO-ZY
(I Love Youzy)**
Vocal Chorus by The Moonbeams
THERE'S NO ONE BUT YOU
Vocal Chorus by Michael Douglas and
The Moonbeams

Kay records another danceable, fascinating disc with The Moonbeams and Michael Douglas doing the vocal honors. In **ONE-ZY TWO-ZY** Kay takes a novelty hit into the Kyser fold, giving it original treatment which includes the versatile Moonbeams. **THERE'S NO ONE BUT YOU** is a sweet swing arrangement with Kay's affable personality behind each note.



XAVIER **cugat**

Col. 36953 **TIERRA VA TEMBLA
(The Earth Will Tremble)**
Vocal Chorus by Del Campo and Boyd
Triplets
RUMBA KUMBA
(Rum-Dee Ruum-Dee)
Vocal Chorus by Del Campo

Cugat plays, and once again American dances to the most irresistible music of all. There are two fine Latin arrangements played to perfection and gliding to the rhythm of the conga drum and marimba. Del Campo handles the vocals on each of these sides, helped out on **TIERRA VA TEMBLA** by the Boyd Triplets.



LES **brown**

Col. 36964 **IN THE MOON MIST
(Adapted from a melody by Godard)**
Vocal Chorus by Doris Day
THE FRIM FRAM SAUCE
Vocal Chorus by Butch Stone

IN THE MOON MIST gives this beautiful Godard melody a Les Brown adaptation and a vocal by Doris Day whose soft, compelling voice has sparked so many Brown arrangements. **THE FRIM FRAM SAUCE** should have been written for Butch Stone. At any rate, the tune which has the country wondering what "shifato on the side" is, gets solid treatment from Butch, the comedian with the Brown orchestra.



KATE **smith**

Col. 36963 **I DIDN'T MEAN A WORD
I SAID**
From "Do You Love Me"
SIOUX CITY SUE
with Vocal Quartet; Orchestra under
the direction of Jack Miller

Kate sings these new hits with the simplicity and beauty for which she is so famous. Accompanying her is Jack Miller with a small band of stellar musicians, whose solos add to the appeal of these fine records.

new
COLUMBIA
popular records
June, 1946

les brown